

# 2019 FACTSHEETS

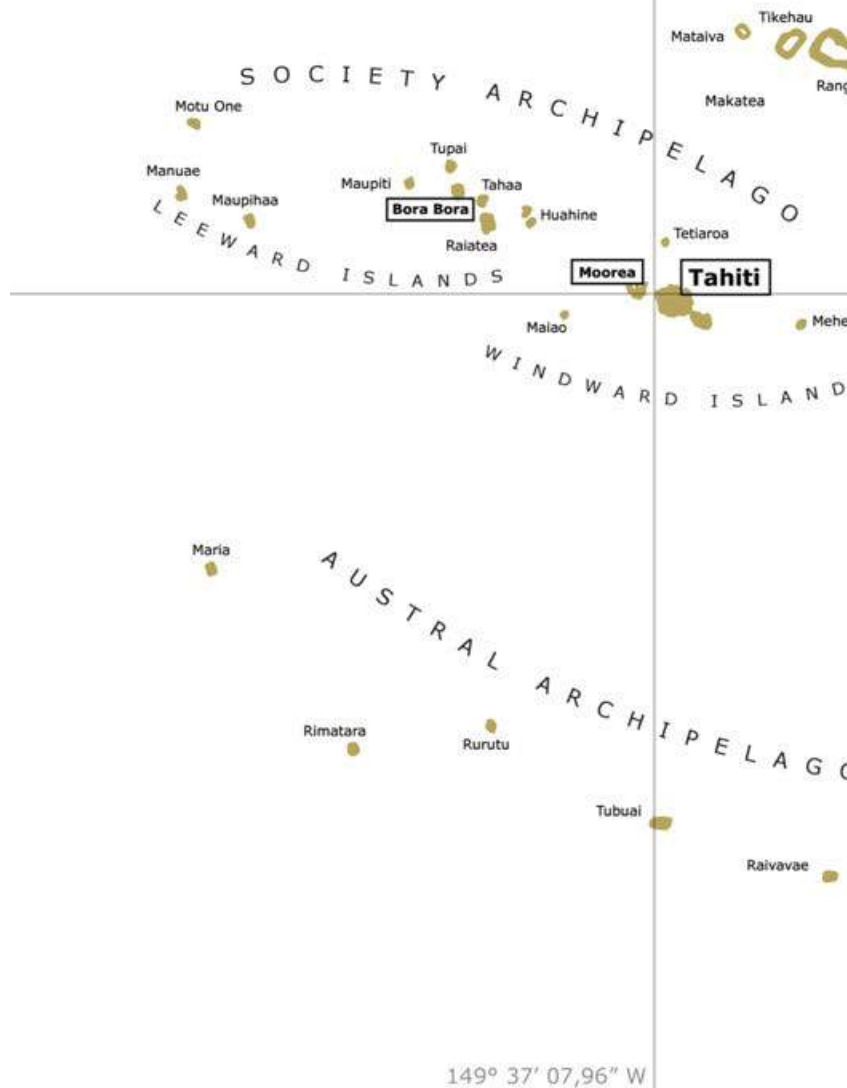
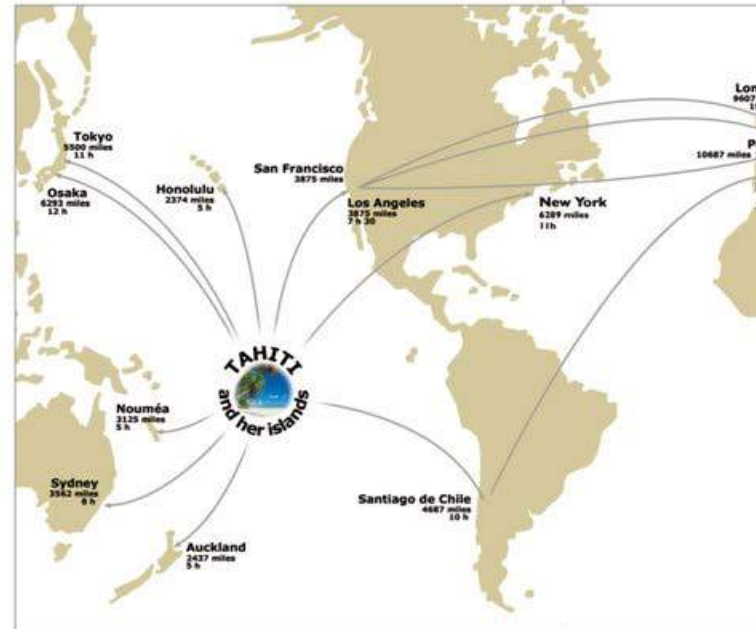




# SUMMARY

MAP OF FRENCH POLYNESIA	4
INTERCONTINENTAL TAHITI RESORT & SPA	6
RESORT MAP	6
HOTEL INFORMATION	8
ROOM DESCRIPTIONS	10
INTERCONTINENTAL MOOREA RESORT & SPA	18
RESORT MAP	18
HOTEL INFORMATION	20
ROOM DESCRIPTIONS	22
INTERCONTINENTAL BORA BORA LE MOANA RESORT	26
RESORT MAP	26
HOTEL INFORMATION	28
ROOM DESCRIPTIONS	30
INTERCONTINENTAL BORA BORA RESORT & THALASSO SPA	34
RESORT MAP	34
HOTEL INFORMATION	36
ROOM DESCRIPTIONS	40

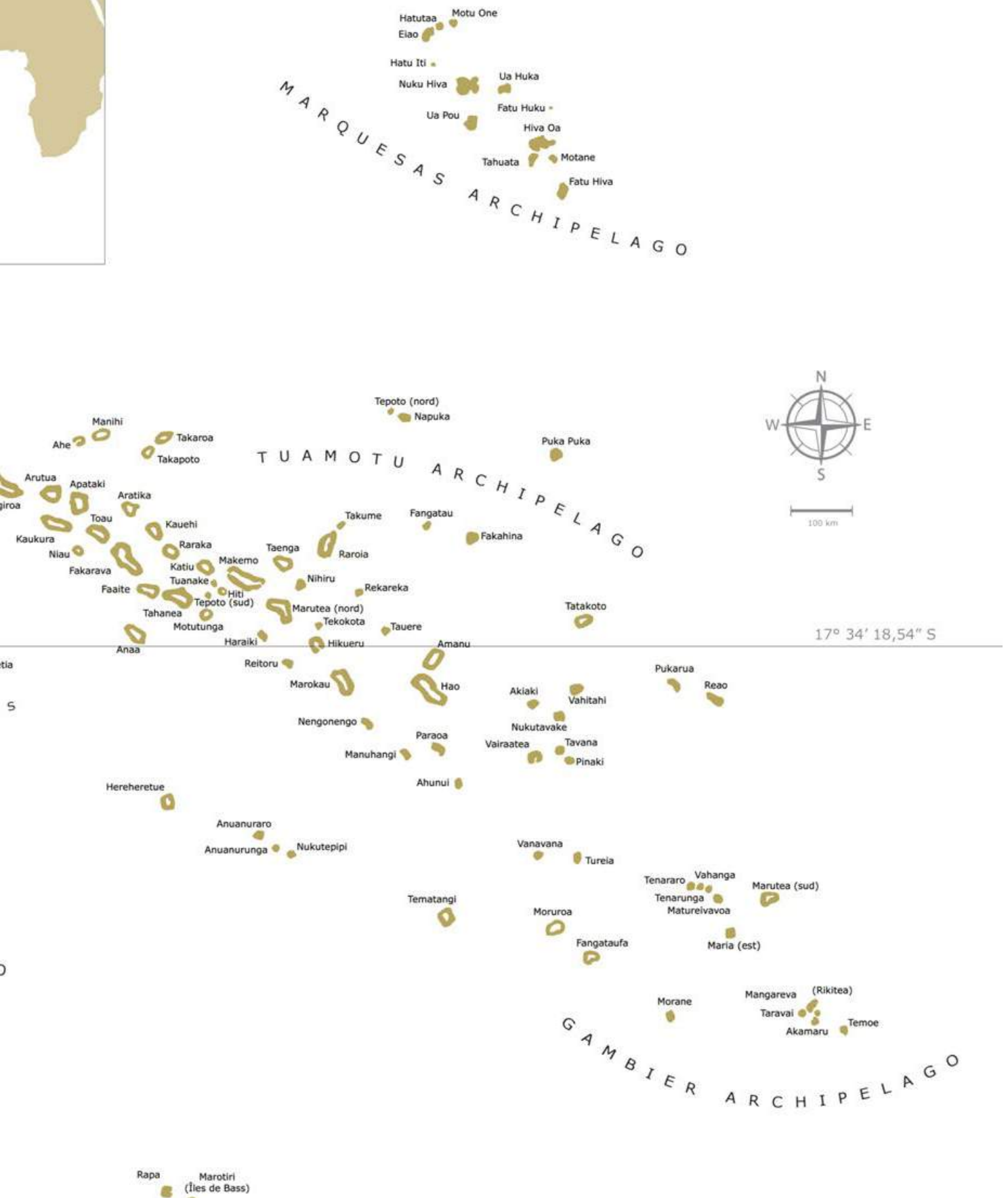
# FRENCH POLYNESIA





## GENERAL INFORMATION

- Timezone: GMT -10
- Temperature: 22°C - 30°C (72°F - 86 °F)
- Wet season: November - March
- Dry season: April - October



# RESORT MAP

LAGOON



## ROOM CAPACITY

ROOM CATEGORY	ROOM TYPE	MAX OCCUPANCY
Standard Room	Standard	2 Adults + 1 child*
	Garden	2 Adults + 1 child*
	Lagoon	2 Adults + 1 child*
Superior Room	Garden	2 Adults + 1 child*
	Lagoon	2 Adults + 1 child*
Panoramic Room	Garden	3 Adults or 2 adults + 2 children*
	Lagoon	3 Adults or 2 adults + 2 children*
Junior Suite Overwater Bungalow	Motu	2 Adults + 1 child*
	Superior Lagoon	2 Adults + 1 child*
Suite	Overwater Motu Villa	4 Adults or 2 adults + 2 children*

\*Child under 15 years old



-  Standard, Garden, Lagoon & Superior Rooms
-  Panoramic Rooms
-  Overwater Motu Bungalow
-  Overwater Superior Lagoon Bungalow
-  Overwater Lagoon Bungalow
-  Overwater Motu Villa Suite

- A Front desk
- B Gift shops
- C Lobby and Lobby Bar
- D Te Tiare restaurant
- E Tiki Bar
- F Te Tiare swimming pool
- G Fare Taina
- H Te Tiare pool hut
- I Spa and fitness center
- J Huriama garden
- K Le Lotus gourmet restaurant, pool and swim-up bar
- L Motu Iti and Lagoonarium
- M Main Motu: open-air Theatre
- N Diving and watersports center
- O Tennis courts

Located on the main island, only two kilometres from the airport and city shopping, the InterContinental Tahiti Resort & Spa is your ideal first stop in French Polynesia, welcoming you into a lush 25-hectare tropical garden, surrounded by clear, cerulean seas.

Featuring overwater bungalows, lagoon-view and garden-view rooms, our premium accommodations provide panoramic views over beautiful Moorea, showcasing the sparkling ocean and the volcanic mountains of the sister island.



# HOTEL INFORMATION



## ACCOMMODATION

InterContinental® Tahiti Resort & Spa is a Polynesian style resort with 246 units spread out between overwater bungalows and several three-storey buildings. The hotel offers several types of rooms and bungalows detailed below:

- 8 Standard rooms, 39 Garden View rooms, and 34 Lagoon View rooms,
- 29 Superior Garden rooms and 51 Superior Lagoon rooms (2 are handicapped accessible rooms),
- 21 Panoramic Garden rooms and 39 Panoramic Lagoon rooms,
- 8 Junior Suite Overwater Motu Bungalows
- 15 Junior Suite Overwater Superior Lagoon Bungalows
- 1 Antares Suite,
- 1 Junior Suite Overwater Motu Villa

## ROOM AMENITIES

All rooms and bungalows are equipped as below:

- Terrace or private balcony (but for the two handicapped accessible rooms)
- Air conditioning
- LCD TV
- Direct dial telephone
- Mini bar (stocked upon request)
- 1 110V/220V outlets
- Wireless Internet access
- Coffee & tea making facilities
- Iron and ironing board
- Bathtub and/or shower
- Hairdryer
- Private safe

The hotel also offers a same day laundry and dry cleaning service (four self-service laundry rooms are also available for guests) and free-of-charge day rooms with private shower for early arrivals or late departures.

Children under 15 can share the room with adult(s) at no extra cost, when the capacity of the room or bungalow permits.

**Check-in 3pm – Check-out 11am**

## DINING

The hotel offers 2 restaurants and 3 bars:

- The all-day dining **Te Tiare** restaurant has been conceived as an amphitheater, with an open kitchen in an authentic Polynesian decor. Recognized as the place welcoming the most beautiful diner shows with Polynesian dances, this restaurant offers 2 theme evenings every week, starting at 7 pm:
  - Wednesday: "**The Marquesan Night**", featuring a dance show by *Toa Huhina*
  - Friday: "**Soirée Merveilleuse**", performed by *Hei Tahiti*The restaurant offers a rich Tahitian Brunch every Sunday from 7 am to 10 am, animated by local craftsmen and musicians and featuring a Tahitian dance show.
- **Le Lotus** gourmet overwater restaurant offers a refined service, during lunch from 12 pm to 2 pm and dinner from 6:30 to 9:30 pm, in an intimate atmosphere, near the sand bottom pool, revealing a magnificent view of Moorea. Annual Closure Notice: Le Lotus restaurant will be closed from Monday January 7th, 2019 and will reopen for dinner on Saturday February 16th, 2019.
- The **Tiki Bar**, open from 10 am until 10 pm. The bar is famous for its live bands at sunset every day from Wednesday until Sunday. Happy Hour every day from 4:30 pm to 5:30 pm on a selection of cocktails.
- **Le Lotus pool swim-up bar**, open from 11 am until 6 pm. It offers tropical cocktails and refreshing drinks.
- **Lobby Bar**, open 24/7. Convenient for late arrivals or early departures. It offers a selection of drinks and snacks and the best sunset views.

## ROOM SERVICE

Available 24/7. A must! Breakfast delivered by outrigger canoe to your overwater bungalow. (reservation one day prior).

## ROMANTIC IDEAS

Traditional Polynesian wedding ceremonies, romantic dinners at Le Lotus overwater gourmet restaurant or in room with a private valet service, romantic room setting, in-room Champagne & amuse-bouche.

More information : [restauration.tahiti@ihg.com](mailto:restauration.tahiti@ihg.com).

## CONCIERGE & LEISURE FACILITIES

The Concierges desk is located in the lobby. Our team will assist you to make the best of the hotel and its surroundings.

- Two freshwater infinity pools:
  - Le Lotus sand bottom pool with its swim-up bar and jacuzzi : 800 m<sup>2</sup> (8,608 Sq.Ft.)
  - Te Tiare's 1,200 m<sup>2</sup> (12,910 Sq.Ft.) swimming pool, cascade and jacuzzi.
- The lagoonarium : twice a day, at 9 am and 3 pm, our "Pool Boys" feed the tropical fish of this natural aquarium.
- Free snorkeling, kayak, tennis, jogging track.
- Various cultural demonstrations each week.
- An exclusive fitness and spa center facing the lagoon and the sister island Moorea: the **Deep Nature Spa** offers signature treatments of the famous brand Algoterm.
- Other Paying activities : water skiing, sundeck, sunset cruises, dolphin encounter excursions, charter yacht, jet skiing, quad, golf (25 miles away), scuba-diving with Top Dive Tahiti (PADI 5 stars),



## INCENTIVE & SPECIAL GROUPS

Fully served meeting and function facilities are available indoors or outdoors up to:

- Cocktail parties: 650 people outdoors.
- Indoors meeting: 300 people theater style
- Sit down dinner: 270 people indoors,

Extensive use made of outdoors facilities: Motu island, Le Lotus pool and beach.

We offer a full service for all meetings, special groups and incentive programs. Please consult our offers on the events & incentive directory or contact our group department for further information or quotation : [bernard.rickenbach@ihg.com](mailto:bernard.rickenbach@ihg.com)

## ENVIRONMENT

InterContinental® Resorts French Polynesia cares deeply for the environment and actively supports sustainable tourism in French Polynesia. To help support this mission, our Community and Conservation Fee will fund organizations such as **Tetiaroa Society**, **Te Mana O Te Moana**, **CRIOBE**, **Green Engage**, **TEDx** etc... to advance sustainability initiatives that lead us towards a better future.

The InterContinental® Tahiti Resort & Spa is following IHG's Green Engage™ program and established an environmental and social charter, aiming at improving the hotel's actions toward the protection of the environment. The hotel commits for instance to control and reduce its water and energy consumptions, as well as its waste production. This commitment also aims at helping the development of the local communities and their integration into the economy.

### InterContinental® Tahiti Resort & Spa

PO Box 6 014 - 98 702 Tahiti - French Polynesia  
Phone: +689 40 86 51 10 - Fax: +689 40 86 51 30  
[intercontinental.tahiti@ihg.com](mailto:intercontinental.tahiti@ihg.com)  
[www.tahiti.intercontinental.com](http://www.tahiti.intercontinental.com)



Reservation: +689 40 86 51 78  
[reservation.tahitiregion@ihg.com](mailto:reservation.tahitiregion@ihg.com)

# ROOM DESCRIPTIONS



## STANDARD ROOMS

Renovated in a fresh Polynesian style in 2018, each Standard Rooms measures 26.6 square meters (286 square feet), and comes with a 5.8-square-meter (62 square feet) private balcony with seating for two. Wide sliding glass doors allow in plenty of natural light.

Each room offers twin or king bedding, with a maximum occupancy of two adults and one child (for children under 15 years old, rollaway beds and cribs are available upon request).

Standard rooms come in three different categories:

- Standard rooms,
- Garden rooms with views of the colourful tropical gardens,
- Lagoon rooms with views of the lagoon and sister island Moorea.



Standard, Garden & Lagoon Rooms

Total square meters : 32.40 m<sup>2</sup> (26.6 m<sup>2</sup> room + 5.8 m<sup>2</sup> terrace).

Total square feet: 348 Sq.Ft. (286 Sq.Ft. room + 62 Sq.Ft. terrace).



## SUPERIOR ROOMS

Each Superior Room measures 26.6 square meters (286 square feet), and comes with a 5.8-square-meter (62 square feet) private balcony with seating for two.

Renovated and refurbished in 2015, they feature wide sliding glass doors which allow for plenty of natural light. Each room offers twin or king bedding, with a maximum occupancy of two adults and one child (for children under 15 years old, rollaway beds and cribs are available upon request).

Superior rooms come in two categories:

- Superior Garden rooms
- Superior Lagoon rooms, including two wheelchair-accessible units.



Superior Garden & Superior Lagoon Rooms

Total square meters : 32.40 m<sup>2</sup> (26.6 m<sup>2</sup> room + 5.8 m<sup>2</sup> terrace).

Total square feet: 348 Sq.Ft. (286 Sq.Ft. room + 62 Sq.Ft. terrace).

### InterContinental® Tahiti Resort & Spa

PO Box 6 014 - 98 702 Tahiti - French Polynesia

Phone: +689 40 86 51 10 - Fax: +689 40 86 51 30

[intercontinental.tahiti@ihg.com](mailto:intercontinental.tahiti@ihg.com)

[www.tahiti.intercontinental.com](http://www.tahiti.intercontinental.com)



Reservation: +689 40 86 51 78

[reservation.tahitiregion@ihg.com](mailto:reservation.tahitiregion@ihg.com)

# ROOM DESCRIPTIONS



## PANORAMIC ROOMS

Enjoy spectacular views from your own private haven. Our 60 Panoramic Rooms with garden or lagoon view are the most spacious of our room categories, measuring 38.5 square meters (414 square feet), plus a 9-square-meter (97 Sq Ft) balcony.

Offering either one king-size or two queen-size beds, they showcase a wide view of our beautiful garden at the ground level, with vistas reaching out beyond the lagoon to Moorea island in the distance. Panoramic Rooms can host up to three adults, or two adults and two children. They're among the top choices of accommodation for honeymooners.

Panoramic Rooms come in two different categories:

- Panoramic Garden rooms (ground floor)
- Panoramic Lagoon rooms (second and third floor).



Panoramic room

Total square meters : 47.5 m<sup>2</sup> (38.5 m<sup>2</sup> room + 9 m<sup>2</sup> terrace).

Total square feet: 511 Sq.Ft. (414 Sq.Ft. room + 97 Sq.Ft. terrace).

Artist rendering



## JUNIOR SUITE OVERWATER LAGOON BUNGALOWS

The resort offers 14 newly renovated Junior Suite Overwater Lagoon Bungalows measuring 38.5 square meters (414 square feet), with a 12-square-meter (129 square feet) deck, located near the Lotus infinity-pool.

These feature a separate lounge and bedroom, with a traditional Polynesian decor, and a direct access to the lagoon from the terrace.



Junior Suite Overwater Lagoon Bungalow

Total square meters : 38.5 m<sup>2</sup> (26.6 m<sup>2</sup> room + 12 m<sup>2</sup> terrace).

Total square feet: 414 Sq Ft (286 Sq Ft room + 129 Sq Ft terrace).

### InterContinental® Tahiti Resort & Spa

PO Box 6 014 - 98 702 Tahiti - French Polynesia

Phone: +689 40 86 51 10 - Fax: +689 40 86 51 30

[intercontinental.tahiti@ihg.com](mailto:intercontinental.tahiti@ihg.com)

[www.tahiti.intercontinental.com](http://www.tahiti.intercontinental.com)



Reservation: +689 40 86 51 78

[reservation.tahiti@ihg.com](mailto:reservation.tahiti@ihg.com)

# ROOM DESCRIPTIONS



## JUNIOR SUITE SUPERIOR OVERWATER LAGOON BUNGALOW

Located at the end of the pontoon, the Overwater Superior Lagoon Bungalow is the perfect spot to directly access the lagoon, enjoy open views of sister island Moorea and breathtaking sunsets.

It measures 37 square meters indoor (398 square feet), with a 16.5-square-meter (177 square feet) deck and is located close to the Lotus infinity-pool and gourmet restaurant.

Decorated in a modern and fresh Polynesian style, it is air-conditioned and features a separate lounge and bedroom with a king-size bed. The luxurious bathroom offers a bathtub and a separate shower.



Junior Suite Overwater Superior Lagoon Bungalow  
Total square meters : 53.5 m<sup>2</sup> (37 m<sup>2</sup> room + 16.5 m<sup>2</sup> deck).  
Total square feet: 475 Sq.Ft. (398 Sq.Ft. room + 177 Sq.Ft. deck).



## JUNIOR SUITE OVERWATER MOTU BUNGALOWS

The eight Overwater Bungalows built around our own private islet, or motu are brand new and feature a modern Polynesian design.

They measure 37 square meters (398 square feet) and have a spacious 32-square-meter deck (344 square feet), situated directly over the lagoon, next to the lagoonarium and the main pool.

The exclusive Overwater Motu Bungalows offer the best view of the sister island Moorea and are ideal to enjoy the lagoon.



Junior Suite Overwater Motu Bungalow

Total square meters : 69 m<sup>2</sup> (37 m<sup>2</sup> room + 32 m<sup>2</sup> terrace).

Total square feet: 743 Sq.Ft. (286 Sq.Ft. room + 344 Sq.Ft. terrace).

### InterContinental® Tahiti Resort & Spa

PO Box 6 014 - 98 702 Tahiti - French Polynesia

Phone: +689 40 86 51 10 - Fax: +689 40 86 51 30

[intercontinental.tahiti@ihg.com](mailto:intercontinental.tahiti@ihg.com)

[www.tahiti.intercontinental.com](http://www.tahiti.intercontinental.com)



Reservation: +689 40 86 51 78

[reservation.tahitiregion@ihg.com](mailto:reservation.tahitiregion@ihg.com)

# ROOM DESCRIPTIONS



## OVERWATER MOTU VILLA SUITE

For the ultimate in luxury and tropical pampering, we offer one 95-square-meter overwater villa (including a 30-square-meter deck).

With thatched walls, white linens and wide floor-to-ceiling windows, its charming tropical décor creates a cosy, intimate ambience, enhanced by a secluded position directly over the lagoon.



Overwater Motu Villa Suite

Total square meters : 95 m<sup>2</sup> (65 m<sup>2</sup> room + 30m<sup>2</sup> terrace).

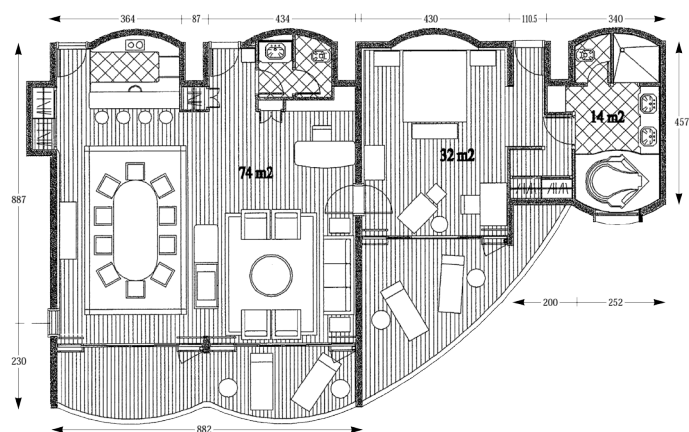
Total square feet: 1023 Sq.Ft. (700 Sq.Ft. room + 303 Sq.Ft. terrace).



## ANTARES SUITE

Our most spacious suite, the Antares Suite delivers pure tropical luxury. Decorated in a traditional and elegant style, and providing 115 square meters of space, the Antares Suite includes a bedroom, bathroom, separate lounge and private bar with all the most luxurious and modern equipment.

The suite is situated in the hotel's Panoramic Rooms building and offers a stunning view of the hotel grounds, the lagoon and Tahiti's sister island Moorea.



Antares Suite

Total square meters : 115 m²

Total square feet: 1238 Sq Ft

### InterContinental® Tahiti Resort & Spa

PO Box 6 014 - 98 702 Tahiti - French Polynesia

Phone: +689 40 86 51 10 - Fax: +689 40 86 51 30

[intercontinental.tahiti@ihg.com](mailto:intercontinental.tahiti@ihg.com)

[www.tahiti.intercontinental.com](http://www.tahiti.intercontinental.com)



Reservation: +689 40 86 51 78

[reservation.tahitiregion@ihg.com](mailto:reservation.tahitiregion@ihg.com)

# RESORT MAP



## ROOM CAPACITY

ROOM TYPE	MAX OCCUPANCY
Lanai Room	2 Adults + 1 child*
Premium Lanai Room	2 Adults + 1 child*
Junior Suite Beach Bungalow	3 Adults or 2 adults + 2 children*
Junior Suite Premium Beach Bungalow	3 Adults or 2 adults + 2 children*
Junior Suite Overwater Bungalow	3 Adults or 2 adults + 2 children*
Junior Suite Premium Overwater Bungalow	3 Adults or 2 adults + 2 children*
Junior Suite Garden Pool Bungalow	3 Adults or 2 adults + 2 children*

\*Child under 15 years old



-  Overwater Premium Bungalow
-  Overwater Bungalow
-  Beach Premium Bungalow
-  Beach Bungalow
-  Garden Pool Bungalow

- A Reception
- B Motu Iti Bar
- C Fare Hana restaurant
- D Fare Nui restaurant
- E The Shell restaurant
- F Conference room
- G Swimming pools
- H Beach Bar
- I Tennis courts
- J TopDive diving center
- K Aquablue Helmet Diving
- L Kite Surf center
- M Moorea Dolphin Center Shop
- N Watersports center
- O Dock
- P Lanai and Premium Lanai rooms
- Q Dolphins' basin
- R Te Mana O Te Moana
- S Sea Turtle Clinic
- T Kids Club
- U Helipad
- V Gym bungalow
- W H  l  ne'Spa
- X Ice machines

A sheltered bay, a clear, turquoise lagoon, a serene setting between the mountains and the sea – the InterContinental Moorea Resort & Spa is paradise on Earth. Set on the northwest coast of the island of Moorea, amid 18 hectares of lush, unspoiled tropical terrain, the hotel matches an idyllic island location with the comfort and luxury of spacious modern bungalows.

InterContinental Moorea Resort & Spa is home to the first spa in French Polynesia – the H  l  ne'Spa; it also features an array of restaurants and bars, the Moorea Dolphin Centre, a turtle care centre, water sports facilities and several boutiques.



# HOTEL INFORMATION



## ACCOMMODATION

InterContinental® Moorea Resort & Spa offers 140 rooms and bungalows:

- 34 Lanai rooms (2 have disabled access and 2 pairs of adjacent rooms) and 13 premium Lanai rooms (1 pair of adjacent rooms)
- 17 Beachfront junior suite bungalows and 11 premium beachfront junior suite bungalows,
- 17 Garden-pool junior suite bungalows,
- 19 Overwater junior suite bungalows and 29 premium overwater junior suite bungalows (with open ocean view).

All rooms and bungalows are air conditioned and equipped with:

- International direct dial telephone with 2 sets,
- Wireless Internet access,
- TV with cable,
- Daily supplied minibar,
- Tea and coffee making facilities,
- Electronic personal safety box
- Iron and ironing board.
- Hairdryer
- Electric razor outlet 110V/220V

Lanai rooms have a private balcony with table and chairs and a private bathroom equipped with a bathtub and integrated shower.

All bungalows are junior suites with a bedroom and a living room equipped with ceiling fans. The sofa-bed and pull-out bed can accommodate up to one adult or two children in the living room. The bathroom is equipped with a bathtub and a separate shower. The terrace has a sundeck equipped with two deckchairs and a gazebo with a pandanus ceiling, table and chairs.

The garden-pool bungalows have a private pool, the beachfront bungalows have a direct access to the beach and the overwater bungalows a direct access to the lagoon thanks to a lower deck. Children under 15 can share the room with adult(s) at no extra cost, when the capacity of the room or bungalow permits. The hotel also offers day rooms with private bathrooms, available for free for early arrivals or late departures.

The hotel is equipped with a heliport.

**Check-in 3pm – Check-out 11am**

## DINING

The hotel offers 3 restaurants and 2 bars:

- **Fare Nui** restaurant : open for breakfast, with a great view on the lagoon
- **The Shell** restaurant, gourmet restaurant open for dinner only, for an elegant and creative culinary experience in a relaxed, muted atmosphere  
**Annual Closure Notice:** The Shell restaurant will be closed from **January 3rd, 2019 to February 28th, 2019.**
- **Fare Hana** restaurant, serves light meals all day in a cool atmosphere: the signature of a tropical, light, and laid-back cuisine. Buffets on the beach (weather permitting) featuring Polynesian dance shows on Mondays and Saturdays.
- **Motu Iti** bar and its shaded terrace, facing the sunset, provide a relaxing atmosphere.
- **Beach Bar**, the new swim-up bar serves drinks and light snacks. A great spot to enjoy lagoon views and the sunset while sipping on exotic cocktails to local and international music.

## ROOM SERVICE

Open from 6:30 am to 9:30 pm to all rooms and bungalows. A must! Breakfast delivered by outrigger canoe to your overwater bungalow. (reservation one day prior)

## ROMANTIC IDEAS

Traditional Polynesian wedding ceremonies, romantic dinners near the beach or in your bungalow with a private valet service, romantic room setting, in-room champagne & amuses-bouche.

Information : [concierge.moorea@ihg.com](mailto:concierge.moorea@ihg.com)

## CONCIERGE & LEISURE FACILITIES

Our concierge desk can be found in the lobby where our team will be delighted to assist you in experiencing the best of the hotel and its surrounding.

- **Free of charge:**  
gym, 2 tennis courts, kayaks and stand up paddleboards (1 hour free), outrigger canoes, 2 infinity pools.
- **At charge:**  
Kids Club, water skiing, wave runners, scuba diving, helmet dive (walking under the sea), catamaran lagoon cruise, frequent transfers to a nearby reef islet (not on hotel premises), excursion to nearby reef islet and ray feeding, deep sea fishing, circle island tour by boat with dolphin watch, speedboat, catajet, safari tour (4x4), circle island tour by minivan, helicopter tour, quad (ATV), horseback riding in the mountain, hiking, rental (car, bicycle, and boat rental no license).
- **Hélène'Spa:** this unique tropical spa nestled in lush vegetation offers a wide range of beauty and body care such as rain shower, exotic flower bath, fresh tropical leave wrapping...
- **Moorea Dolphin Center:** informative and interactive sessions with dolphins
- **The sea turtle clinic:** managed by the NGO "Te Mana o te Moana", created in partnership with the Polynesian Department of the Environment. Its role is to safeguard these endangered species within nursing infrastructures in the hotel lagoon.



## INCENTIVE & SPECIAL GROUPS

The hotel offers several venues for private or exclusive events up to :

- Sit down dinner: 280 people indoors,
- Indoors conference: 350 people amphitheater-style,
- Sit down dinner: 400 people outdoors

We offer a full service for all meetings, special groups and incentive programs. Please consult our offers on the events & incentive directory or contact our group department for further information or quotation : [bernard.rickenbach@ihg.com](mailto:bernard.rickenbach@ihg.com)

## ENVIRONMENT

InterContinental® Resorts French Polynesia cares deeply for the environment and actively supports sustainable tourism in French Polynesia. To help support this mission, our Community and Conservation Fee will fund organizations such as **Tetiaroa Society**, **Te Mana O Te Moana**, **CRIOBE**, **Green Engage**, **TEDx** etc... to advance sustainability initiatives that lead us towards a better future.

The InterContinental® Moorea Resort & Spa is following IHG's Green Engage™ Program and established an environmental and social charter, aiming at improving the hotel's actions toward the protection of the environment. The hotel commits for instance to controlling and reducing its water and energy consumptions, as well as its waste production. This commitment also aims at helping the development of the local communities and their integration into the economy.

The hotel also hosts a sea turtles clinic, managed by the NGO "Te Mana o te Moana", which aims at safe guarding these endangered species.

### InterContinental® Moorea Resort & Spa

PO Box 1 019 - 98 729 Moorea - French Polynesia  
Phone: +689 40 55 19 19 - Fax: +689 40 55 19 55  
[intercontinental.moorea@ihg.com](mailto:intercontinental.moorea@ihg.com)  
[www.moorea.intercontinental.com](http://www.moorea.intercontinental.com)



Reservation: +689 40 86 51 78  
[reservation.tahiti@ihg.com](mailto:reservation.tahiti@ihg.com)

# ROOM DESCRIPTIONS



## LANAI ROOMS

Comfortable and spacious, the Lanai Rooms measure 30 square meters (323 square feet) in addition to terraces or balconies that give on the luxuriant resort garden. They feature a king-size bed that may be separated as two twin beds. Two Lanai Rooms are wheelchair-accessible and 4 pairs are connecting.

**Premium Lanai Rooms** are located on the first floor for expansive views of the lagoon and the ocean.



**Lanai Room**  
Total square meters : 37 m<sup>2</sup> (30 m<sup>2</sup> room + 7m<sup>2</sup> terrace).  
Total square feet: 398 Sq Ft (323 Sq Ft room + 75 Sq Ft terrace).



## JUNIOR SUITE GARDEN POOL BUNGALOWS

The 17 Garden-Pool Bungalows Junior Suites are dotted throughout the beautiful gardens. They measure 38 square meters (409 square feet) without counting their terrace. Beds are king-size and a convertible sofa-bed is available in the lounge area.

Guests will enjoy the large and private terrace, the thatched gazebo with table & chairs, sundeck with lounge chairs for sunbathing and the private plunge pool.



Junior Suite Garden Pool Bungalow  
Total square meters : 67.1 m<sup>2</sup> (38 m<sup>2</sup> bungalow + 22.2 m<sup>2</sup> terrace + 6.9 m<sup>2</sup> pool).  
Total square feet: 722 Sq Ft (409 Sq Ft bungalow + 238 Sq Ft terrace + 75 Sq Ft pool).

### InterContinental® Moorea Resort & Spa

PO Box 1 019 - 98 729 Moorea - French Polynesia  
Phone: +689 40 55 19 19 - Fax: +689 40 55 19 55  
[intercontinental.moorea@ihg.com](mailto:intercontinental.moorea@ihg.com)  
[www.moorea.intercontinental.com](http://www.moorea.intercontinental.com)



Reservation: +689 40 86 51 78  
[reservation.tahiti@ihg.com](mailto:reservation.tahiti@ihg.com)

# ROOM DESCRIPTIONS



## JUNIOR SUITE BEACH BUNGALOWS

28 Beach Bungalows are nestled on a white sand beach, gently sloping into the lagoon, under the shade of the coconut trees. They measure 38 square meters (409 square feet), excluding their terraces. All have a king-size bed, and a convertible sofa-bed in their lounge area.

The large and private terrace features a thatched gazebo with table & chairs, sundeck with lounge chairs for sunbathing.

**Premium Beach Bungalows** feature astounding views of the lagoon.



**Junior Suite Beach Bungalow**

Total square meters : 60 m<sup>2</sup> (38 m<sup>2</sup> bungalow + 15,6m<sup>2</sup> terrace + 6,4m<sup>2</sup> gazebo).

Total square feet: 647 Sq Ft (409 Sq Ft bungalow + 168 Sq Ft terrace + 70 Sq Ft gazebo).



## JUNIOR SUITE OVERWATER BUNGALOWS

Our 46 Overwater Bungalows are spread around a series of green islands (*motu* in Tahitian). They are our largest bungalows, measuring 42 square meters (452 square feet) and offer a large terrace.

All Junior Suites have a king-size bed and a convertible sofa-bed. Guests will be able to make the most of the lagoon thanks to the large and private terrace, with a thatched gazebo with table & chairs, sundeck with lounge chairs for sunbathing and direct access to the lagoon.

**Premium Overwater Bungalows** boast an optimal location which ensures a quiet atmosphere and have unobstructed views of the lagoon and the horizon.



**Junior Suite Overwater Bungalow**  
 Total square meter: 64.4 m<sup>2</sup> (42 m<sup>2</sup> bungalow + 21.4 m<sup>2</sup> terrace + 2 m<sup>2</sup> sundeck)  
 Total square feet: 704 Sq Ft (452 Sq Ft bungalow + 251 Sq Ft terrace + 21 Sq Ft Sundeck)

### InterContinental® Moorea Resort & Spa

PO Box 1 019 - 98 729 Moorea - French Polynesia

Phone: +689 40 55 19 19 - Fax: +689 40 55 19 55

[intercontinental.moorea@ihg.com](mailto:intercontinental.moorea@ihg.com)

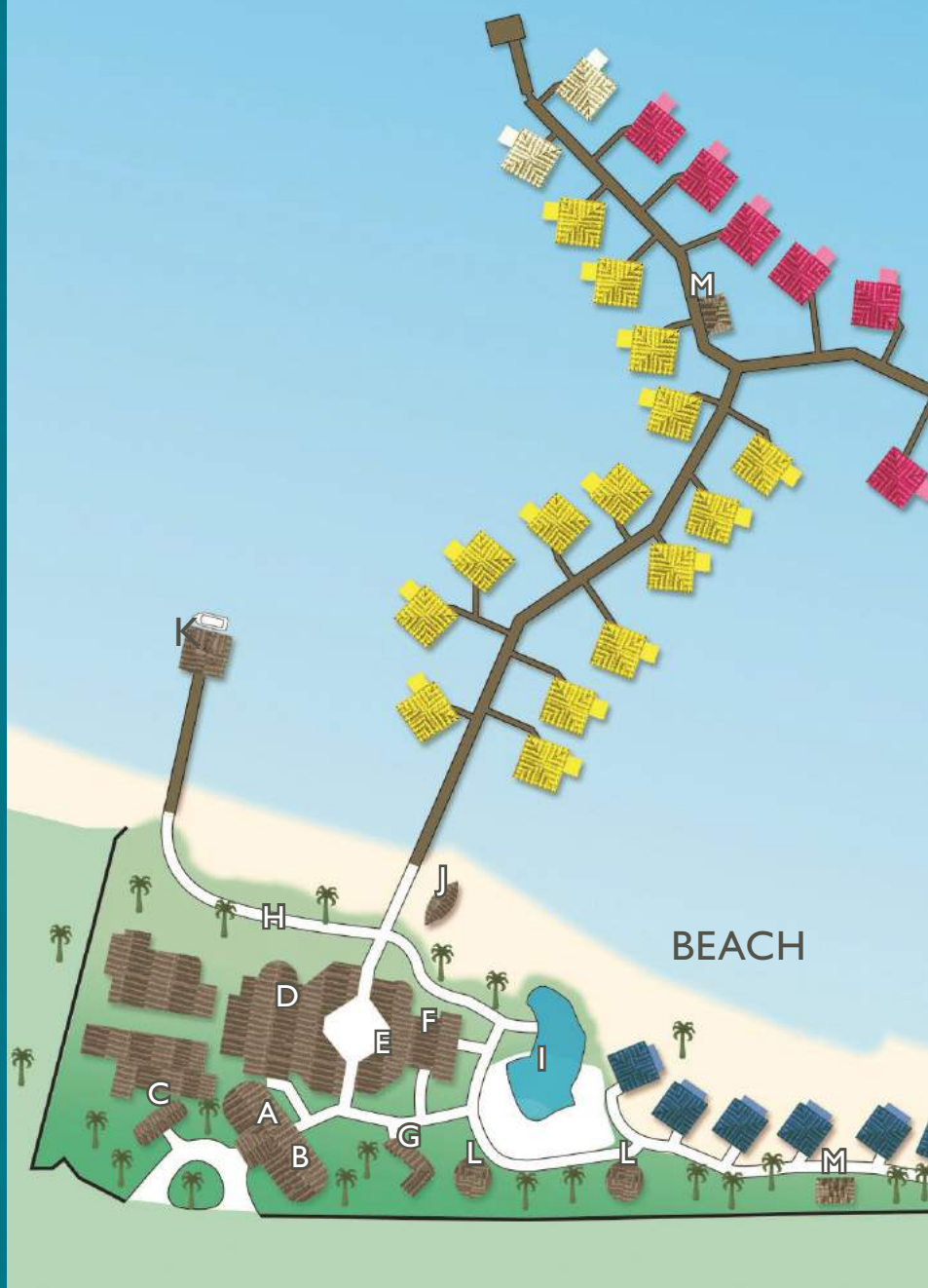
[www.moorea.intercontinental.com](http://www.moorea.intercontinental.com)



Reservation: +689 40 86 51 78

[reservation.tahitiregion@ihg.com](mailto:reservation.tahitiregion@ihg.com)

# RESORT MAP



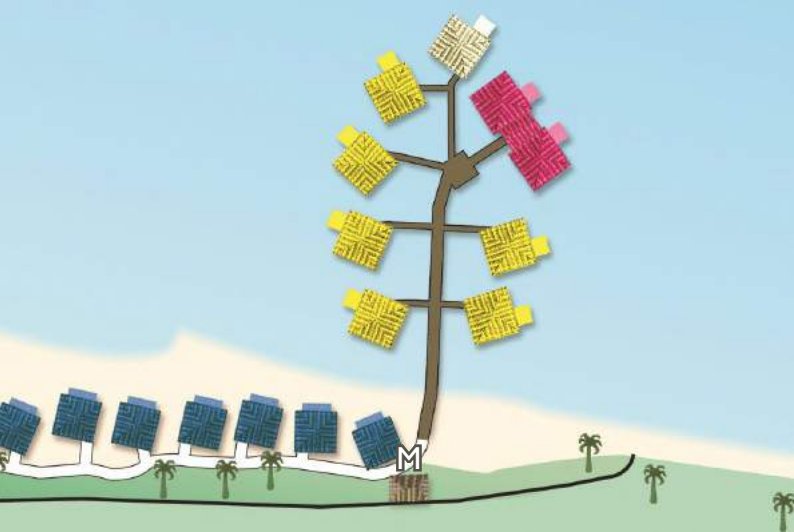
## ROOM CAPACITY

ROOM TYPE	MAX OCCUPANCY
Junior Suite Beach Bungalow	2 Adults + 2 children*
Junior Suite Lagoon Overwater Bungalow	2 Adults + 1 child*
Junior Suite Horizon Overwater Bungalow	2 Adults + 1 child*
Junior Suite Poevai Suite Overwater Suite	4 Adults + 2 children*

\*Child under 15 years old



## LAGOON



Poevai Horizon Overwater Suite



End of Pontoon Horizon Overwater Bungalow



Horizon Overwater Bungalow



Lagoon Overwater Bungalow



Beach Bungalow

- 
- A Front desk
  - B Pearl shop
  - C Te Anuanua shop
  - D Noa Noa restaurant
  - E Concierge Desk
  - F Vini Vini bar
  - G Activity Lounge
  - H Patio
  - I Swimming pool
  - J Beach fare
  - K Main dock
  - L Shower Room
  - M Ice Cubes

Experience Bora Bora, the Pearl of the Pacific, from our exclusive location on Matira Point. The pride of French Polynesia, Bora Bora is a tropical paradise with pristine turquoise waters and lush volcanic peaks, a tranquil lagoon oasis protected by a spectacular coral reef.

Our intimate, convivial luxury 4-star resort is located on the southernmost point of Bora Bora, close to one of the most beautiful beaches in the world. Stylish overwater bungalows stretch out over our lagoon, with the peaks of Mount Otemanu and Pahia rising up in the distance – the perfect romantic destination for honeymooners and couples seeking an exotic getaway.

## BORA BORA



INTERCONTINENTAL.  
BORA BORA LE MOANA RESORT

# HOTEL INFORMATION



## ACCOMMODATION

InterContinental® Bora Bora Le Moana Resort offers 62 individual bungalows:

- 12 Junior suite Beach bungalows (2 have disabled access),
- 21 Junior suite Lagoon overwater bungalows,
- 24 Junior suite Horizon overwater bungalows,
- 5 Junior suite end of pontoon Horizon overwater bungalows,
- 1 Poevai Horizon overwater suite (2 Horizon overwater bungalows linked by a lounge).

All of the bungalows are equipped with :

- Air conditioning,
- International direct dial telephone,
- Wireless Internet access,
- Ceiling fan,
- Sitting area,
- Terrace with 2 deck chairs,
- Private solarium with exterior shower,
- Complimentary tea and coffee making facilities,
- 2 LCD TVs,
- Convertible sofa bed,
- Bathroom with separate shower and bath,
- Electronic personal safety box,
- Iron and ironing board,
- Hair dryer,
- Electric razor outlet 110V/220V

Overwater bungalows provide an exclusive glass coffee table with a direct view of the lagoon water.

The hotel also provides its guests with free wireless Internet access at the front desk and with transit rooms with individual showers for early arrivals or late departures.

Children under 15 can share the room with adult(s) at no extra cost, when the capacity of the room or bungalow permits.

**Check-in 3pm – Check-out 11am**



## DINING

The InterContinental® Bora Bora Le Moana Resort has one restaurant and one restaurant-bar :

- **Noa Noa restaurant & terrace:** open every day from 7 am to 10 am and from 7 pm to 9 pm. Opens into the patio and out to the lagoon with its Polynesian décor. Its terrace steps down to the beach. It offers French, international and Polynesian food. International dinner show on Tuesdays and "Surf and Turf" dinner show on Saturdays, with Polynesian dance show.
- **Vini Vini restaurant & bar terrace:** open from 10:30 am to 10:30 pm. This is the ideal spot to meet and relax with drinks, exotic cocktails or light snacks. Happy hour every day from 5:30 pm to 6:30 pm.

## ROOM SERVICE

Open from 7 am to 9 pm.

A must! Breakfast delivered by outrigger canoe to your overwater bungalow. (reservation one day prior)

## ROMANTIC IDEAS

Traditional Polynesian wedding ceremonies on the beach or end of pontoon, romantic dinners at the restaurant, on the beach, at the end of the pontoon or on the terrace of your bungalow with private valet services, romantic setting of your bungalow, in-room Champagne and amuses-bouche. Information : [concierge.borabora.lemoana@ihg.com](mailto:concierge.borabora.lemoana@ihg.com)

## CONCIERGE & LEISURE FACILITIES

The concierges will be delighted to assist you in experiencing the best of the hotel and its surrounding.

- **Free of charge:**  
access to the freshwater sand bottom pool, with its waterfall and luxurious vegetation, kayak, canoe, snorkeling equipment. Various demonstrations each week such as va'a initiation, traditional costume demonstration, pareo show and the preparation of a Polynesian recipe (traditional raw fish salad).
- **At charge:**  
shark and ray excursion, kitesurf, lagoonarium tour, scuba diving, guided island tour by jet ski, speed boat island tour, catamaran excursion, catamaran sunset cruise, deep-sea fishing, parasailing, SUV safari island tour, car and bike rental, quad (ATV), boat rental, private excursions.
- **Deep Ocean Spa:** Located at the InterContinental® Bora Bora Resort & Thalasso Spa, the first overwater thalasso center in Bora Bora offers a whole range of Algoterm treatments and a fitness center. Reservation gives access to a free-of-charge transfer to the sister resort. Transfers between the InterContinental® Bora Bora Resort & Thalasso Spa and the InterContinental® Bora Bora Le Moana Resort are available to let you experience all facilities of these two resorts.

## INCENTIVE & SPECIAL GROUPS

Please consult our offers on the events & incentive directory or contact our group department for further information or quotation :  
[Bernard.rickenbach@ihg.com](mailto:Bernard.rickenbach@ihg.com)

## ENVIRONMENT

InterContinental® Resorts French Polynesia cares deeply for the environment and actively supports sustainable tourism in French Polynesia. To help support this mission, our Community and Conservation Fee will fund organizations such as **Tetiaroa Society**, **Te Mana O Te Moana**, **CRIOBE**, **Green Engage**, **TEDx** etc... to advance sustainability initiatives that lead us towards a better future.

The InterContinental® Bora Bora Le Moana Resort is following IHG's Green Engage™ Program and established an environmental and social charter, aiming at improving the hotel's actions toward the protection of the environment. The hotel commits for instance to controlling and reducing its water and energy consumptions, as well as its waste production. This commitment also aims at helping the development of the local communities and their integration into the economy.

### InterContinental® Bora Bora Le Moana Resort

PO Box 156 - 98 730 Bora Bora - French Polynesia  
Phone: +689 40 60 49 00 - Fax: +689 40 60 49 99  
[intercontinental.borabora.lemoana@ihg.com](mailto:intercontinental.borabora.lemoana@ihg.com)  
[www.lemoana.intercontinental.com](http://www.lemoana.intercontinental.com)



Reservation: +689 40 86 51 78  
[reservation.tahiti@ihg.com](mailto:reservation.tahiti@ihg.com)

# ROOM DESCRIPTIONS



## JUNIOR SUITE BEACH BUNGALOWS

Perched along the shoreline between coconut palms, our Junior Suite Beach Bungalows offer 36 square meters (387 square feet) of indoor space, opening onto the beachfront with direct access to the pristine waters of the lagoon.

The bedroom features a king-size bed, separate living area with a sofa-bed and a spacious bathroom with separate shower and bathtub. There is also a wide private terrace with two deck chairs, a solarium and an outdoor shower.



**Junior Suite Beach Bungalow**

Total square meters : 55 m<sup>2</sup> (36 m<sup>2</sup> inside bungalow + 19 m<sup>2</sup> terrace).

Total square feet: 592 Sq Ft (388 Sq Ft inside bungalow + 204 Sq Ft terrace).



## JUNIOR SUITE LAGOON & HORIZON OVERWATER BUNGALOWS

Lagoon and Horizon Overwater Bungalows are equipped with a living room, featuring a glass coffee table, separate bedroom with a king-size bed, bathroom with separate shower and bathtub, and a private terrace with direct access to the lagoon.

Lagoon Overwater Bungalows are closer to the hotel with views of the beach and the main island.

Horizon Overwater Bungalows are located the furthest in the lagoon with views of the horizon, the little island motu and the reef.

End of Pontoon Overwater Bungalows are located at the end of the pontoon walkway, offering the best views on the property.



Junior Suite Lagoon & Horizon Overwater bungalows

Total square meters : 63 m<sup>2</sup> (36 m<sup>2</sup> inside bungalow + 19 m<sup>2</sup> terrace + 8 m<sup>2</sup> solarium).  
Total square feet: 678 Sq Ft (388 Sq Ft inside bungalow + 204 Sq Ft terrace + .86 Sq Ft solarium).



Lagoon Overwater Bungalows



Horizon Overwater Bungalows



End of Pontoon Horizon Overwater Bungalows

# ROOM DESCRIPTIONS



## POEVAI HORIZON OVERWATER SUITE

Perfect for larger parties, the Poevai Horizon Overwater Suite – two junior suites linked by a 20-square-meter lounge (215 Sq Ft), provides accommodation for up to four adults and two children. Both junior suite bungalows measure 36 square meters (387 square feet) and feature a separate bedroom and living room, plus a 27-square-meter (290-square-foot) sundeck with sunloungers, outdoor shower and direct lagoon access. A modern en suite features a separate shower and bathtub and boutique bath amenities.

In each living room, guests can enjoy watching tropical fish swimming beneath the bungalow through a special glass coffee table – your window to the lagoon below. A sofa bed is available for an extra guest or child.



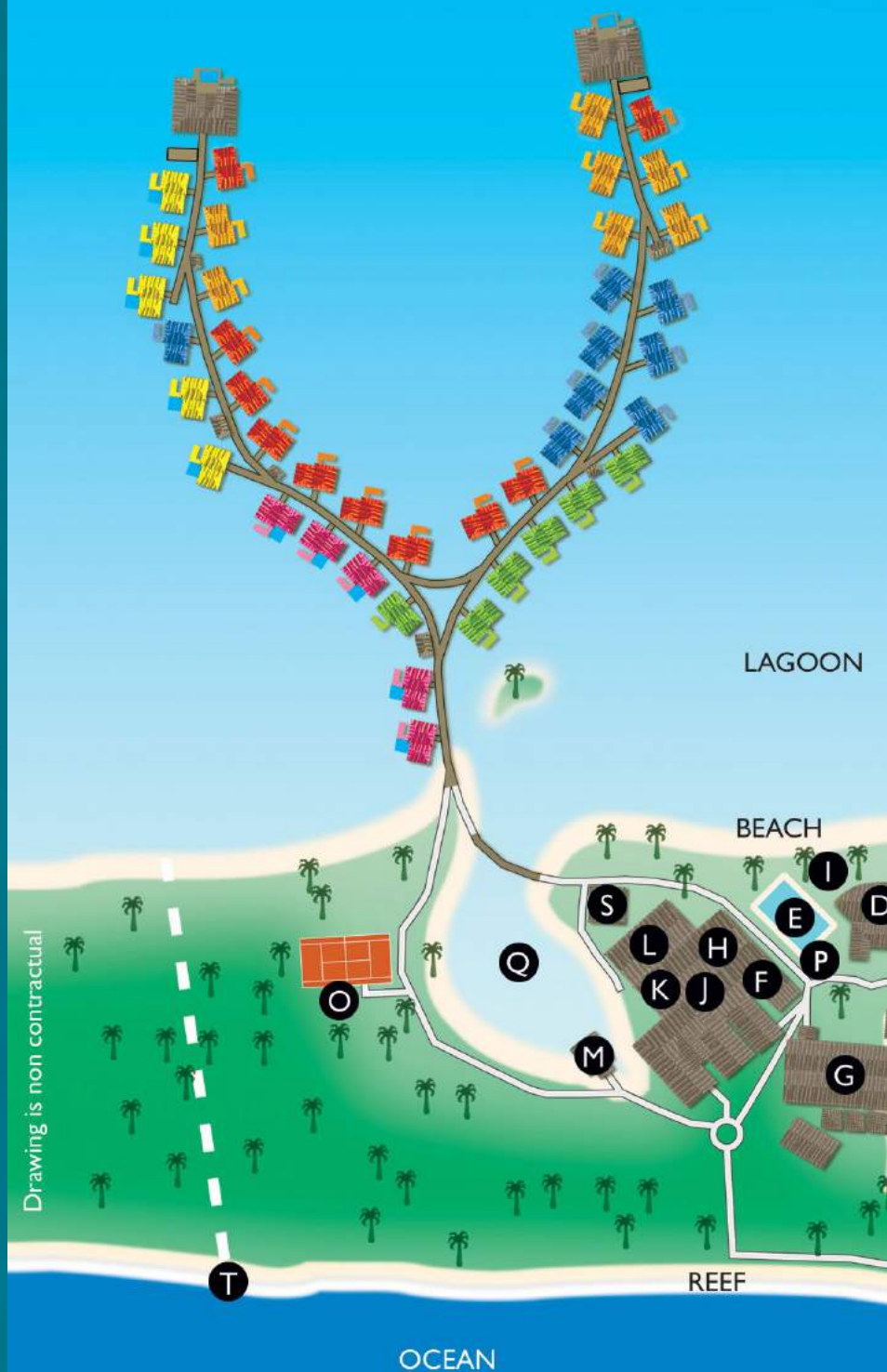
Poevai Horizon Overwater Suite

Total square meters : 146 m<sup>2</sup> (92 m<sup>2</sup> inside bungalow + 54 m<sup>2</sup> terrace).

Total square feet: 1 569 Sq Ft (989 Sq Ft inside bungalow + 580 Sq Ft terrace).



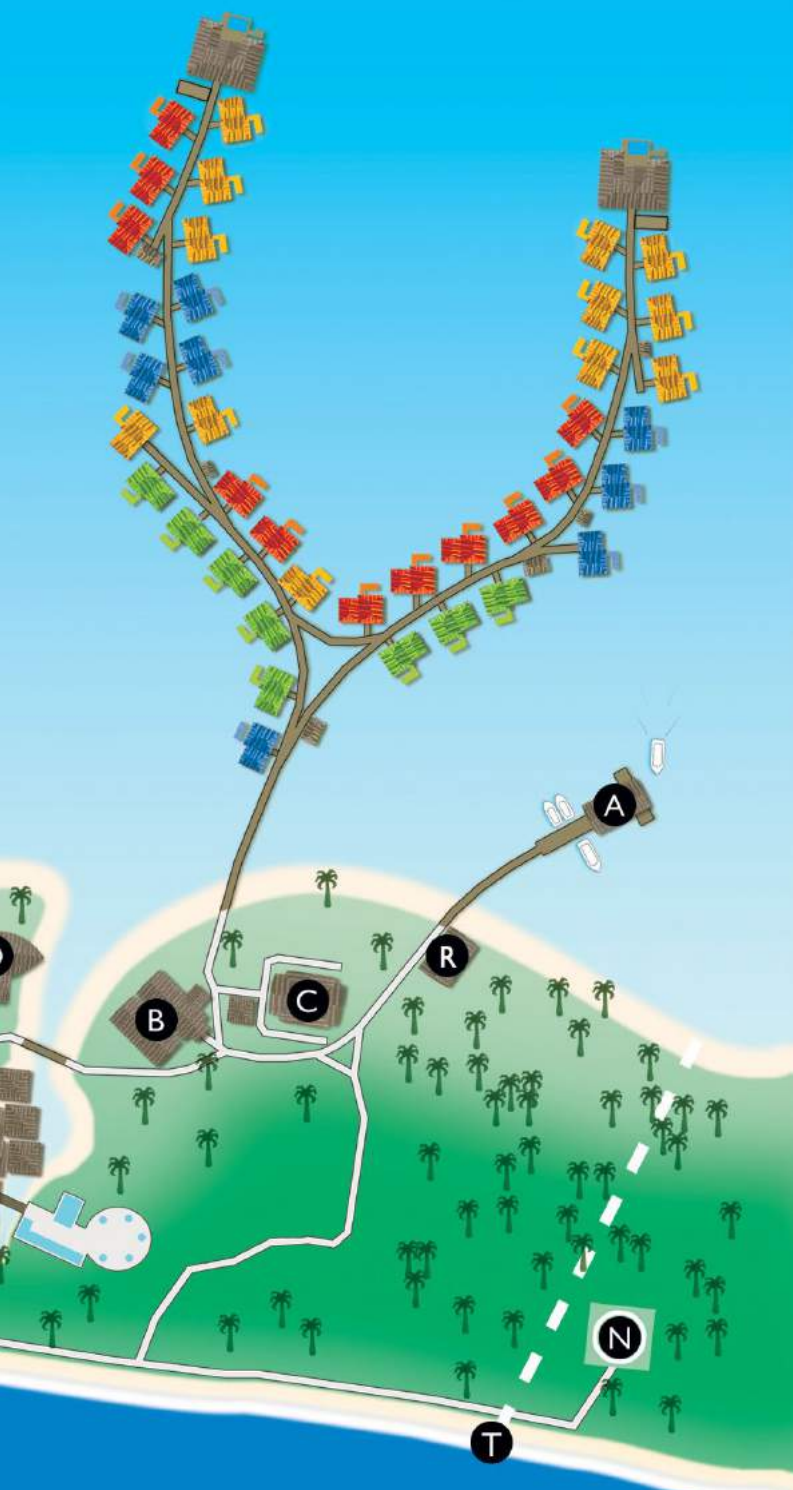
# RESORT MAP



## ROOM CAPACITY

ROOM TYPE	MAX OCCUPANCY
Emerald Overwater Villa	3 Adults or 2 adults + 2 children*
Sapphire Overwater Villa	3 Adults or 2 adults + 2 children*
Diamond Overwater Villa	3 Adults or 2 adults + 2 children*
Diamond Otemanu Overwater Villa	3 Adults or 2 adults + 2 children*
Pool Overwater Villa	3 Adults or 2 adults + 2 children*
Pool Premium Overwater Villa	3 Adults or 2 adults + 2 children*
1-Bedroom Brando Suite Bora Bora	3 Adults or 2 adults + 2 children*
2-Bedroom Brando Suite Bora Bora	4 Adults + 4 children*

\*Child under 15 years old



Emerald Overwater Villa



Sapphire Overwater Villa



Diamond Overwater Villa



Diamond Otemanu Overwater Villa



Pool Overwater Villa



Pool Premium Overwater Villa



Brando Suite Bora Bora

- 
- A Marina
  - B Front desk
  - C Day rooms
  - D Sands bar & restaurant
  - E Swimming pool
  - F Azur boutique
  - G Deep Ocean Spa
  - H Bubbles bar & lounge
  - I Beach lounge
  - J InterContinental® Concierge
  - K Hinerava pearl jewelry boutique
  - L Reef restaurant - Le Corail restaurant
  - M Blue Lagoon Chapel
  - N Helipad
  - O Tennis court
  - P Swimming pool desk
  - Q Lagoonarium
  - R TOPDIVE Center
  - S South Beach Bar & ice cream parlor
  - T Property limit

Motu Piti Aau – the ‘islet of two hearts’ – rises up out of the turquoise waters that surround the main island of Bora Bora. Bright blue lagoon on one side, sapphire South Pacific on the other, this slender strip of land is home to French Polynesia’s most exclusive InterContinental Resort.

The InterContinental Bora Bora Resort & Thalasso Spa faces the main island of Bora Bora and the majestic Mount Otemanu, and is perfectly placed to provide guests the best of Bora Bora: spectacular views, luxury overwater villas, lush tropical gardens and a wide range of water sports and activities.

## BORA BORA



INTERCONTINENTAL  
BORA BORA RESORT & THALASSO SPA

# HOTEL INFORMATION



## ACCOMMODATION

The InterContinental® Bora Bora Resort and Thalasso Spa has a total of 84 overwater villas:

- 14 Emerald Overwater Villas with a magnificent view over the beach (three villas are wheelchair-accessible)
- 16 Sapphire Overwater Villas with an extraordinary view of the horizon
- 19 Diamond Overwater Villas with a beautiful view of Bora Bora's main island
- 21 Diamond Otemanu Overwater Villas, with a perfect view of the Mount Otemanu
- 5 Pool Overwater Villas, with a beautiful view over the beach
- 5 Pool Premium Overwater Villas, with a great horizon view
- 4 Brando Suites Bora Bora, with the best 180° view of Bora Bora's main island and Mount Otemanu

All villas are equipped with:

- Complimentary wireless Internet access
- Glass coffee table with a great view over the lagoon,
- Sofa convertible into 2 single beds,
- Daily stocked minibar,
- Coffee and tea making facilities,
- Electronic safety box,
- International direct dial telephones,
- LCD TV sets with local and international channels and pay TV,
- Bose Ipod docking station,
- CD/DVD players,
- Ceiling fans,
- Separate shower and bathtub,
- Double sink,
- Hair dryer,
- Bathroom 110V electric razor outlet
- Walk-in dressing,
- Private sundeck with exterior fresh water shower

Children under 15 can share the room with adult(s) at no extra cost, when the capacity of the room or bungalow permits. The hotel also provides free wireless Internet access in all public areas and transit rooms with individual showers for early arrivals or late departures. A helipad is also available on resort grounds.

**Check-in 3pm – Check-out 11am**



## DINING

InterContinental® Bora Bora Resort & Thalasso Spa features 3 restaurants and 3 bars:

- **Reef** restaurant & terrace: open for breakfast from 6:30 am to 10:30 am and for dinner from 06:30 pm to 9:30 pm. This beautifully and modern designed restaurant offers a Mediterranean cuisine in a "chic" tropical décor. On Mondays and Fridays, the Reef restaurant hosts exclusive theme nights with traditional Polynesian dance shows and delicious buffet dinner.
- **Sands** restaurant: located on the resort's private white sand beach with a great view of Mount Otemanu. Lunch from 12 pm to 3 pm with a selection of salads, sandwiches, grill and a salad bar. Coffee shop from 3 pm to 6:30 pm with a selection of salads and sandwiches. Dinner from 6:30 pm to 9:30 pm with a selection of salads, sandwiches, grill and meals.
- **Le Corail** restaurant: overlooking the lagoon, this gourmet restaurant is open from 6:30pm to 9:30 pm and offers a refined cuisine with a local touch. The restaurant has the largest wine cellar in French Polynesia.  
**Annual Closure Notice:** Le Corail restaurant will be closed from **January 4th, 2019 to February 2nd, 2019.**
- **Bubbles Bar & terrace:** this trendy bar overlooks the beach, the pool, the lagoon and the spectacular Mount Otemanu. Drinks, exotic cocktails and light snacks are served from 3 pm to 11 pm.  
Happy hour every day from 5 pm to 6 pm.
- The **Sunset Theater** is the ideal location to enjoy a refreshing drink at sunset.  
Happy Hour every day from 5 pm to 6 pm.
- The **South Beach Bar:** located near the wide sandy beach of the resort, dotted with coconut trees and comfortable sun loungers, shaded by pandanus beach umbrellas. A large selection of cocktails, ice-creams and snacks is available from 11 am to 5 pm.
- The **pool:** a large infinity pool on the beach facing Mt. Otemanu. Bar service with appetizers and cocktails available.

## ROOM SERVICE

Available 24/7. A must! Breakfast delivered by outrigger canoe to your overwater bungalow. (reservation one day prior)

## ROMANTIC IDEAS

Our concierge team offers traditional Polynesian wedding ceremonies on the beach or in our overwater "Blue Lagoon Chapel", romantic dinners at the Reef restaurant, on the beach or on the deck of your villa, a romantic setting of the villa with Champagne and amuse-bouches.

Information: [concierge.boraboraspa@ihg.com](mailto:concierge.boraboraspa@ihg.com)

## INCENTIVE & SPECIAL GROUPS

We offer a full service for all meetings, special groups and incentive programs for up to 100 people for indoor cocktails. Please consult our offers on the events & incentive directory or contact our group department for further information or quotation :  
[bernard.rickenbach@ihg.com](mailto:bernard.rickenbach@ihg.com)

## ENVIRONMENT

InterContinental® Resorts French Polynesia cares deeply for the environment and actively supports sustainable tourism in French Polynesia. To help support this mission, our Community and Conservation Fee will fund organizations such as **Tetiaroa Society, Te Mana O Te Moana, CRIOBE, Green Engage, TEDx** etc... to advance sustainability initiatives that lead us towards a better future.

The InterContinental® Bora Bora Le Moana Resort is following IHG's Green Engage™ Program and established an environmental and social charter, aiming at improving the hotel's actions toward the protection of the environment. The hotel commits for instance to controlling and reducing its water and energy consumptions, as well as its waste production. This commitment also aims at helping the development of the local communities and their integration into the economy.

## InterContinental® Bora Bora Resort & Thalasso Spa

PO Box 156 - 98 730 Bora Bora - French Polynesia  
Phone: +689 40 60 76 00 - Fax: +689 40 60 76 99  
[intercontinental.borabora.thalasso@ihg.com](mailto:intercontinental.borabora.thalasso@ihg.com)  
[www.thalasso.intercontinental.com](http://www.thalasso.intercontinental.com)



Reservation: +689 40 86 51 78  
[reservation.tahiti@ihg.com](mailto:reservation.tahiti@ihg.com)

# HOTEL INFORMATION



## CONCIERGE & LEISURE FACILITIES

The concierge will be delighted to assist you in experiencing the best of the hotel and its surrounding.

- Free-of-charge:  
daily cultural demonstrations at the pool such as pareo tying lessons and palm frond weaving, outrigger canoe, kayak, paddle board, paddle boat, snorkeling equipment, tennis, , fitness room, various board games.
- At charge:  
motu island transfer, shark and ray feeding excursion by motorized canoe including island tour, jet ski, speed boat, lagoonarium tour, scuba diving, catamaran excursion, catamaran sunset cruise, deep sea fishing, parasailing, waterskiing, wakeboard, glass bottom boat tour, circle island tour by bus, SUV safari island tour, car and bike rental, ATV tours, boat rental, private excursions.
- Daily and regular transfer to the InterContinental® Bora Bora Le Moana Resort to enjoy both resorts.
- **The Deep Ocean Spa:** the first overwater Thalasso center in the southern hemisphere on 4,000 sq m (43,055 sq ft), with signature deep sea water treatments: Bora Bora Deep Blue massage, Algospa, cold see plunge, jacuzzi, deep chiller walk steam bath, sauna, esthetical treatments.



# ROOM DESCRIPTIONS



## OVERWATER VILLAS

Overwater Villas measure 95 square meters (1,022 square feet) each, including a 30-square-meter (323 square feet) terrace, and offer views of the lagoon and beach. Modern and luxurious, they feature sleek, contemporary décor with traditional Polynesian design touches.

They feature a plush king-size bed (or twin beds on request) facing a large picture window that overlooks the lagoon and beach. Each villa also has a spacious living room with a glass coffee table that looks down onto the pristine waters and tropical fish below.



Overwater Villa

Total square meters : 95 m<sup>2</sup> (65 m<sup>2</sup> inside villa + 30m<sup>2</sup> terrace).

Total square feet: 1023 Sq Ft (700 Sq Ft inside villa + 303 Sq Ft terrace).



Emerald Overwater Villas offer views of the beach and the motu,



Sapphire Overwater Villas showcase views of the lagoon.



Diamond Overwater Villas provide views of Bora Bora's main island



Diamond Otemanu Overwater Villas feature views over the lagoon and the majestic Mount Otemanu.

#### InterContinental® Bora Bora Resort & Thalasso Spa

PO Box 156 - 98 730 Bora Bora - French Polynesia

Phone: +689 40 60 76 00 - Fax: +689 40 60 76 99

[intercontinental.borabora.thalasso@ihg.com](mailto:intercontinental.borabora.thalasso@ihg.com)

[www.thalasso.intercontinental.com](http://www.thalasso.intercontinental.com)



Reservation: +689 40 86 51 78

[reservation.tahitiregion@ihg.com](mailto:reservation.tahitiregion@ihg.com)



## POOL OVERWATER VILLAS

Pool Overwater Villas offer views of the beach and feature a private 17-square-meter (172 square feet) outdoor pool. Adjacent to the pool is a spacious shaded terrace and sundeck with sun loungers for sun bathing and direct access into the lagoon. Each villa also features a freshwater shower located on the sundeck.

Pool Premium Overwater Villas offer stunning horizon infinity views.



**Pool Overwater Villa**

Total square meters : 140 m<sup>2</sup> (65 m<sup>2</sup> inside villa + 58 m<sup>2</sup> terrace + 17m<sup>2</sup> pool)

Total square feet: 1507 Sq Ft (700 Sq Ft inside villa + 635 Sq Ft terrace + 172 Sq Ft pool)

# ROOM DESCRIPTIONS



Pool Premium Overwater Villa



Pool Premium Overwater Villa



Pool Premium Overwater Villa

### InterContinental® Bora Bora Resort & Thalasso Spa

PO Box 156 - 98 730 Bora Bora - French Polynesia

Phone: +689 40 60 76 00 - Fax: +689 40 60 76 99

[intercontinental.borabora.thalasso@ihg.com](mailto:intercontinental.borabora.thalasso@ihg.com)

[www.thalasso.intercontinental.com](http://www.thalasso.intercontinental.com)



Reservation: +689 40 86 51 78

[reservation.tahiti@ihg.com](mailto:reservation.tahiti@ihg.com)

# ROOM DESCRIPTIONS



## BRANDO SUITES BORA BORA

The Brando Suites Bora Bora provide stunning views of Mt. Otemanu and are perfect for those seeking privacy.

The two-bedroom Overwater Suites measure 322 square meters (3,465 square feet), including the 108-square-meter (1,162 square feet) terrace areas.

The two master bedrooms, each with a plush king-size bed (or twin beds on request), face a large picture window and overlook the lagoon and the island.

The two-bedroom configuration allows access to the exclusive solarium located on the second floor.



**Brando Suite Bora Bora (Two-Bedroom Suite)**

Total square meters : 322 m<sup>2</sup> (195 m<sup>2</sup> inside villa + 108 m<sup>2</sup> terrace + 19 m<sup>2</sup> pool)

Total square feet: 3465 Sq Ft (2100 Sq Ft room + 1162 Sq Ft terrace + 205 Sq Ft pool)





InterContinental Tahiti Resort & Spa



InterContinental Moorea Resort & Spa



InterContinental Bora Bora Le Moana Resort



InterContinental Bora Bora Resort & Thalasso Spa

INTERCONTINENTAL FRENCH POLYNESIA

Phone: +689 40 86 51 78

Fax: +689 40 86 51 30

[reservation.tahiti@ihg.com](mailto:reservation.tahiti@ihg.com)

[www.intercontinental.com](http://www.intercontinental.com)